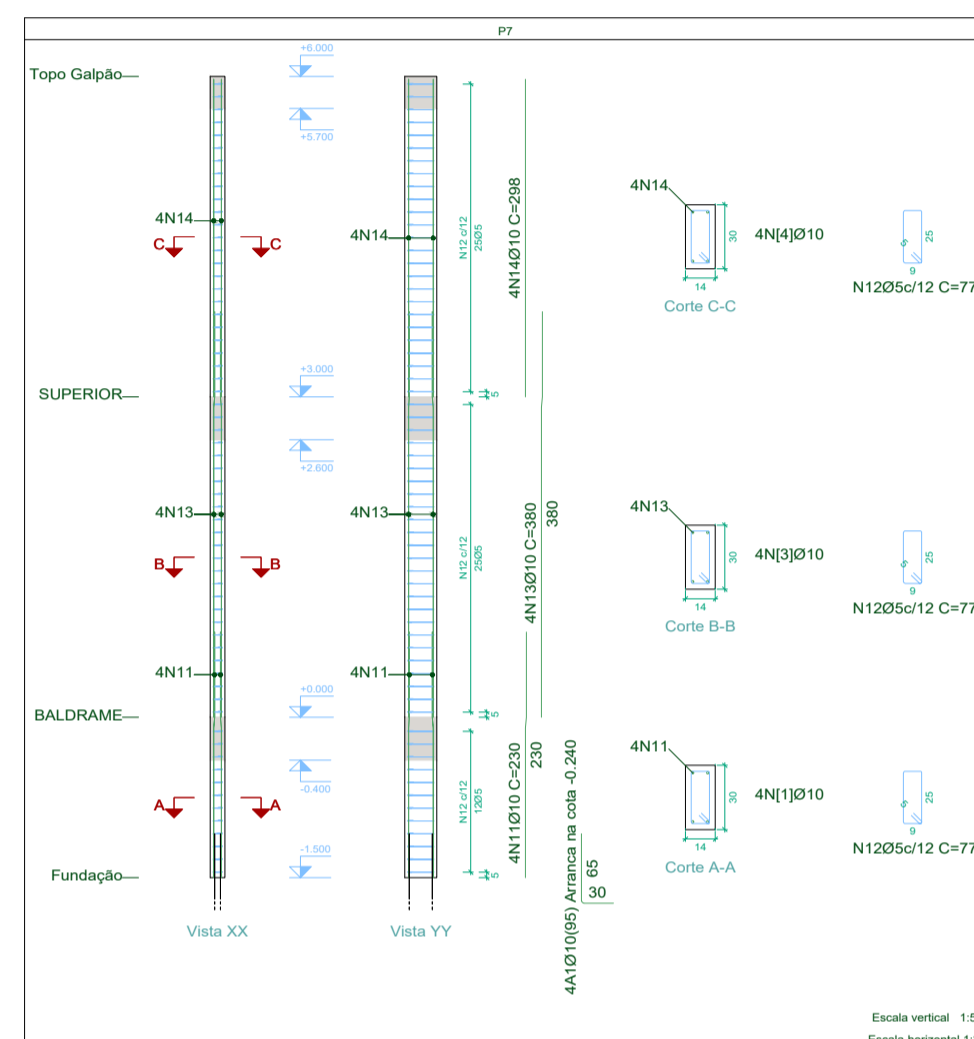
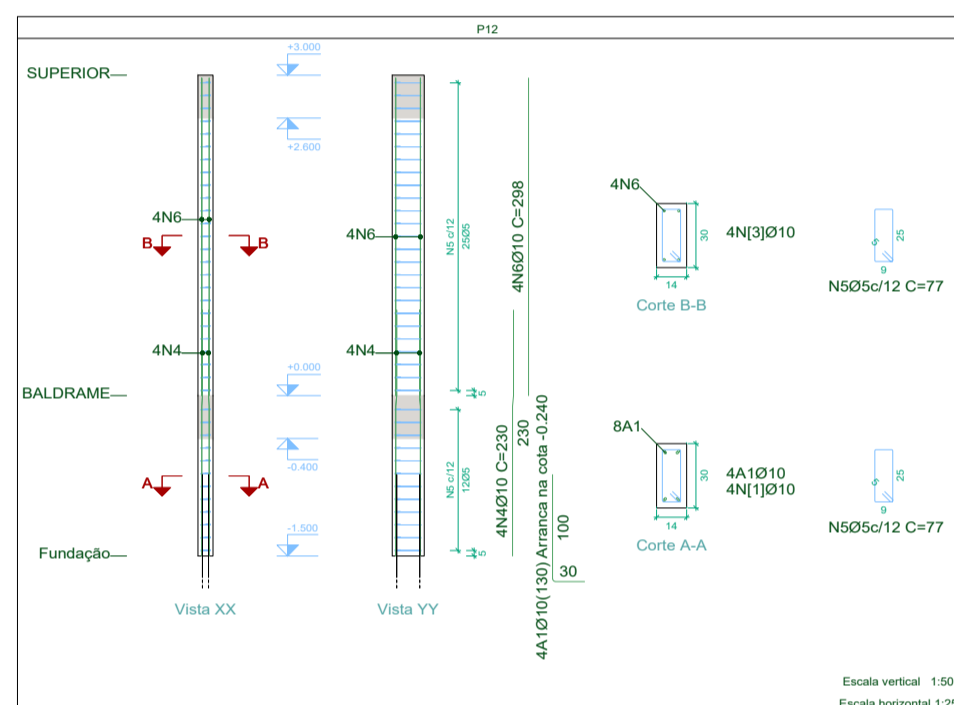
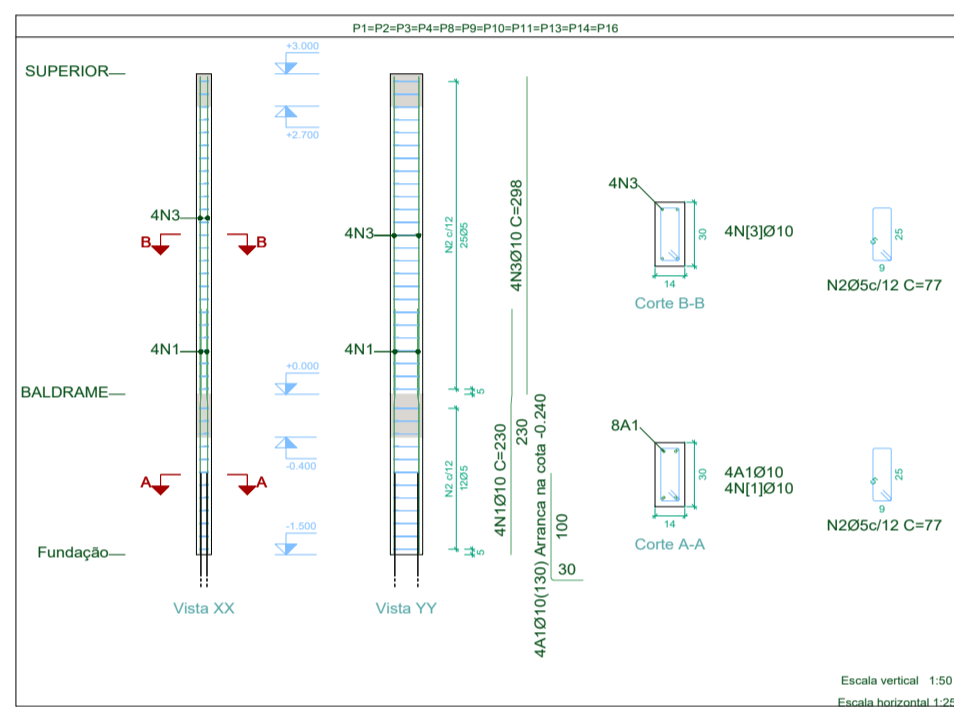



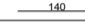



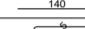




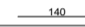




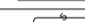
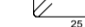


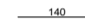
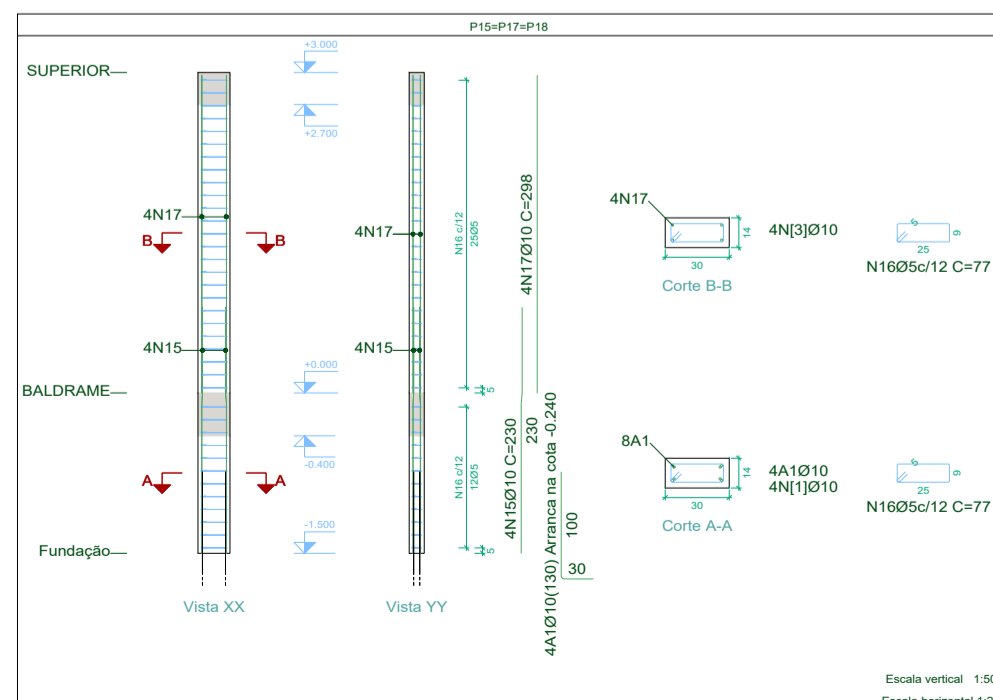
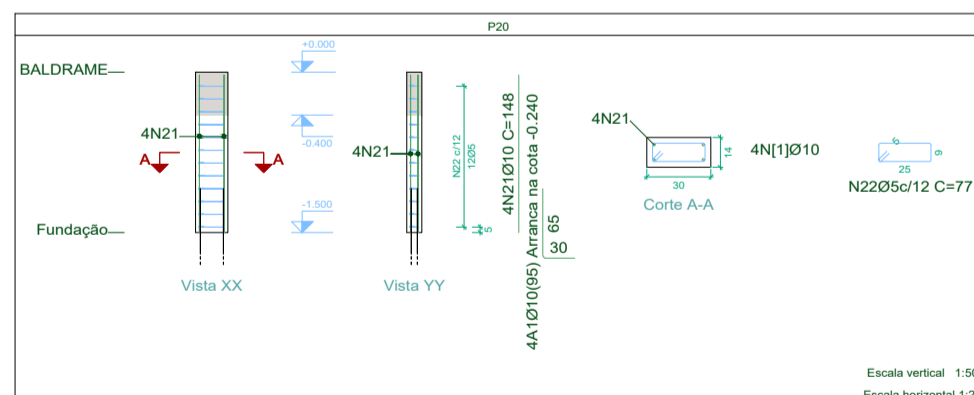
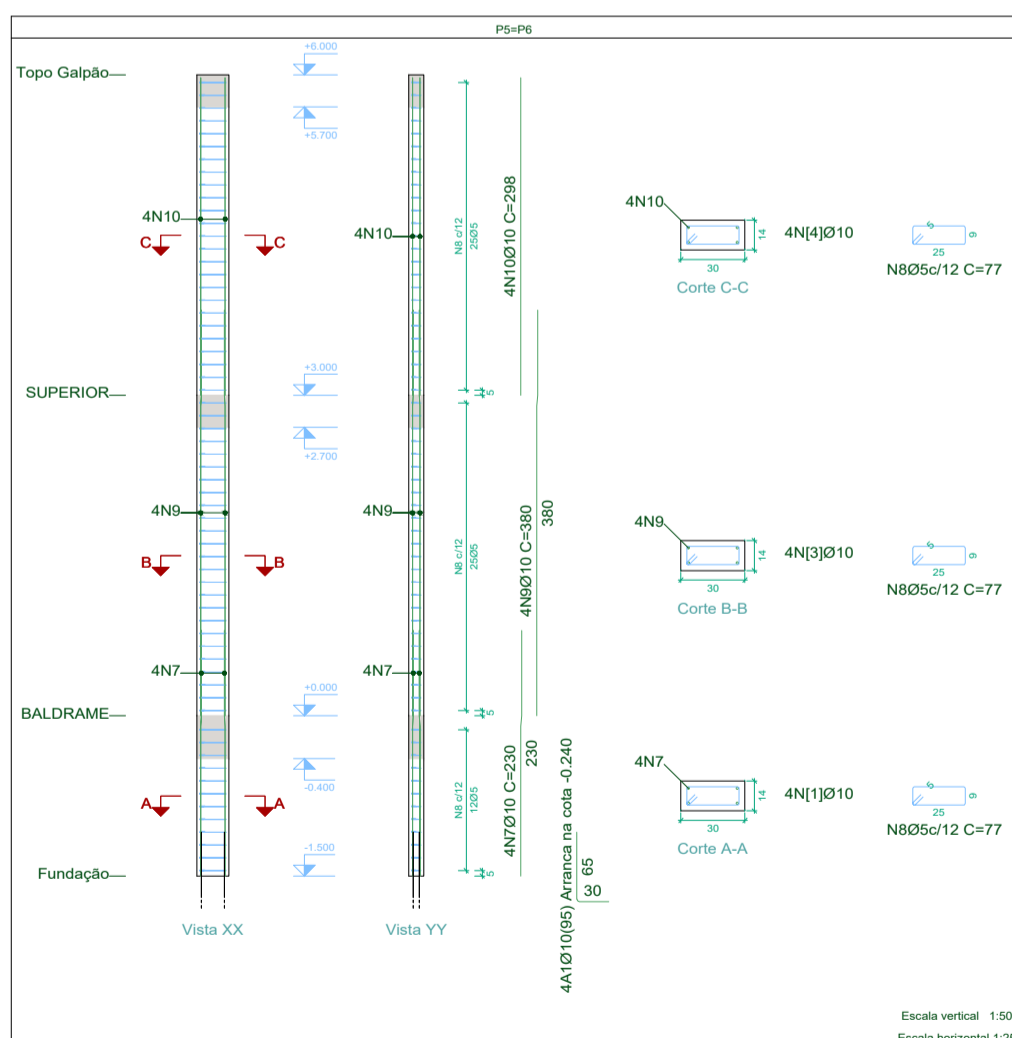


## DETALHAMENTO DOS PILARES

[illegible]

Elemento	Pos.	Diam. Q	Esquina (cm)	Comp (cm)	Total (cm)	CA-50 (kg)	CA-60 (kg)
P1-P2-P3-P4-P8 P9-P10-P11-P13 P14-P8	1	Ø10	4 	230	920	5.7	
	2	Ø5	37 	77	2849	5.7	4.5
	3	Ø10	4 	298	1192	7.3	
P12	4	Ø10	4 	230	920	5.7	
	5	Ø5	37 	77	2849	5.7	4.5
	6	Ø10	4 	298	1192	7.3	
P9-P8	7	Ø10	4 	230	920	5.7	
	8	Ø5	62 	77	4774	5.7	7.5
	9	Ø10	4 	360	1520	9.4	
P7	10	Ø10	4 	298	1192	7.3	
				Total=10%	14.3	5.0	8.3
					(x2)	49.2	16.6
P7	11	Ø10	4 	230	920	5.7	
	12	Ø5	62 	77	4774	5.7	7.5
	13	Ø10	4 	360	1520	9.4	
P15-P17-P18	14	Ø10	4 	298	1192	7.3	
				Total=10%	14.3	5.0	8.3
					(x2)	24.6	16.6
P15-P17-P18	15	Ø10	4 	230	920	5.7	
	16	Ø5	37 	77	2849	5.7	4.5
	17	Ø10	4 	298	1192	7.3	
P19				Total=10%	14.3	5.0	15.0
					(x2)	42.9	45.0
	18	Ø10	4 	230	920	5.7	
P20	19	Ø5	37 	77	2849	5.7	4.5
	20	Ø10	4 	298	1192	7.3	
				Total=10%	14.3	5.0	5.0
P20	21	Ø10	4 	148	592	3.6	
	22	Ø5	12 	77	924	1.5	1.5
				Total=10%	4.0	1.7	1.7
				Ø10:	0.0	106.6	0.0
				Ø5:	306.6	0.0	106.6
				Total:	306.6	106.6	106.6

Resumo Aço Pilares	Comp. total (m)	Peso+10% (kg)	Total
CA-50 Ø10	452.8	307	307
CA-60 Ø5	608.3	105	105
<b>Total</b>			<b>412</b>



  
Kaique Gabriel Silva Ferreira  
Engenheiro Civil  
CREA-BA: 051796934-3

	<p><b>PREFEITURA MUNICIPAL DE SANTA INÊS</b></p> <p>Projeto de Lei: 001/2019, de 19 de Maio de 2019 - Santa Inês, MA          CEP: 65520-000 - Tel: (77) 3536-1981 - Ramal 22          E-mail: <a href="mailto:gerencia@prefeitura.santaines.ma.gov.br">gerencia@prefeitura.santaines.ma.gov.br</a></p>	<p>PROPOSTA: PREFEITURA MUNICIPAL DE SANTA INÊS</p> <p>ENDEREÇO: BR-040, CEP: 65.300-000</p>
---	---	--

**CONSTRUÇÃO DE UNIDADE DE TRIAGEM PARA TRATAMENTO DE RESÍDUO SÓLIDOS NO MUNICÍPIO DE SANTA INÊS/BA**

**PROJETO ESTRUTURAL**

EST  
02/07

### CARACTERÍSTICAS DO AÇO:

- 

- ### PROPRIEDADES DOS MATERIAIS:

1. CONCRETO  
1.1. MASSA ESPECÍFICA.

Se não for conhecida, para efeito de cálculo pode-se adotar: 2400 kg/m<sup>3</sup> (concreto simples) ou 2500 kg/m<sup>3</sup> (concreto armado).

- 1.2. COEFICIENTE DE DILATAÇÃO TÉRMICA:  
10°C-5

- 1.3. RESISTÊNCIA CARACTERÍSTICA À COMPRESSÃO ( $F_{ck}$ ):  
 $F_{ck} = 25 \text{ MPa}$  (28 dias) em todos os pisos.

- 1.4. MÓDULO DE ELASTICIDADE SECANTE DO CONCRETO:
- $E_{cs} = 25743 \text{ MPa}$  (28 dias) em todos os pisos.

2. AÇO

- 2.1. MASSA ESPECÍFICA:  
7850 kg/m<sup>3</sup> (armadura passiva e ativa)

- 10°C -5, para  $(-20^{\circ} < T < 150^{\circ}\text{C})$  onde:  
T - Temperatura ambiente.

- ### 2.3. MÓDULO DE ELASTICIDADE

Na falta de ensaios ou valores fornecidos pelo fabricante, podemos adotar:  
E = 210 GPa.

## CARACTERÍSTICAS DO PROJETO

CLASSE DE AGRESSIVIDADE DO AMBIENTE:

1. CLASSE III
2. AGRESSIVIDADE - FORTE  
TIPO DE AMBIENTE - VIA

Tipo de estrutura	Componente ou elemento	Classe de agressividade ambiental (Tabela 9.1)			
		I	II	III	IV <sup>a</sup>
		Obrimento nominal mm			
Concreto armado	Laje <sup>a</sup>	20	25	35	45
	Vigas <sup>a</sup>	25	35	40	50
	Elementos de concreto armado com espessura variando com a seção <sup>a</sup>	30	35	40	50
Concreto protendido <sup>a</sup>	Laje <sup>a</sup>	25	35	40	50
	Vigas <sup>a</sup>	30	35	45	50

**CARGAS:**

3. CARGA PERMANENTE: 100 kgf/m<sup>2</sup>
4. CARGA ACIDENTAL: 150 kgf/m<sup>2</sup>
5. CARGA RESERVATÓRIO: 300 kgf/m<sup>2</sup>
6. VENTO: 30 m/s

## TIPO DE SOLO:

1. Solo argiloso:  
Combinações Fundamentais = 2.00 kg/cm<sup>2</sup>  
Combinações Sísmicas e Acidentais = 3.00 kg/cm<sup>2</sup>